

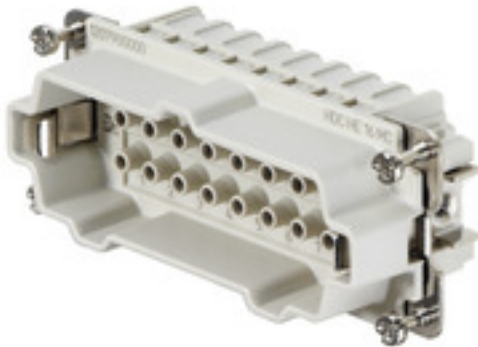
HDC HE 16 MC**Weidmüller Interface GmbH & Co. KG**

Klingenbergstraße 26

D-32758 Detmold

Germany

www.weidmueller.com



For the crimp connection, the wire connection level is designed as a crimp contact. The established crimp connection has been used as a standard for decades.

Crimp contacts are not delivered with the inserts.

Number of poles: **16**

Rated current: **16 A**

Rated voltage: **500 V**

Nominal voltage acc. to UL/CSA: **600 V AC/DC**

Crimp connection

General ordering data

Version	HDC insert, Male, 500 V, 16 A, Number of poles: 16, Crimp connection, Size: 6
Order No.	1207900000
Type	HDC HE 16 MC
GTIN (EAN)	4008190171698
Qty.	1 pc(s).

Creation date July 23, 2024 10:40:20 AM CEST

Catalogue status 23.07.2024 / We reserve the right to make technical changes.

HDC HE 16 MC

Weidmüller Interface GmbH & Co. KG

Klingenbergstraße 26

D-32758 Detmold

Germany

www.weidmueller.com

Technical data

Dimensions and weights

Depth	84.5 mm	Depth (inches)	3.327 inch
Height	34 mm	Height (inches)	1.339 inch
Width	34 mm	Width (inches)	1.339 inch
Net weight	46 g		

Temperatures

Limit temperature	-40 °C ... 125 °C
-------------------	-------------------

Dimensions

Height of plug	34 mm	Total length base	84.5 mm
Width	34 mm		

General data

BG	6			
Colour	beige			
Conductor cross-section	4 mm ²			
Free from halogens	true			
Insulating material	PC glass-fibre reinforced (UL-listed and railway-certified)			
Insulating material group	IIIa			
Insulation strength	10 ¹⁰ Ω			
Low smoke acc. DIN EN 45545-2	Yes			
Material	Copper alloy			
Number of poles	16			
Plugging cycles, gold	≥ 500			
Plugging cycles, silver	≥ 500			
Pollution severity	3			
Rated current (DIN EN 61984)	16 A			
Rated current (UR)	Wire connection cross section AWG	AWG 12		
	Rated current	20 A		
	Wire connection cross section AWG	AWG 14		
	Rated current	15 A		
	Wire connection cross section AWG	AWG 16		
	Rated current	10 A		
	Wire connection cross section AWG	AWG 18		
	Rated current	7 A		
Rated current (cUR)	Wire connection cross section AWG	AWG 20		
	Rated current	5 A		
	Wire connection cross section AWG	AWG 12		
	Rated current	18 A		
	Wire connection cross section AWG	AWG 14		
	Rated current	14.5 A		
	Wire connection cross section AWG	AWG 16		
	Rated current	12 A		
Rated current (cUR)	Wire connection cross section AWG	AWG 18		
	Rated current	7.5 A		
	Wire connection cross section AWG	AWG 20		
	Rated current	8 A		
	Rated impulse voltage (DIN EN 61984)	6 kV		
	Rated voltage (DIN EN 61984)	500 V		
	Rated voltage according to UL/CSA	600 V AC/DC		
	Series	HE		

Creation date July 23, 2024 10:40:20 AM CEST

Catalogue status 23.07.2024 / We reserve the right to make technical changes.

2

HDC HE 16 MC

Weidmüller Interface GmbH & Co. KG

Klingenbergstraße 26

D-32758 Detmold

Germany

www.weidmueller.com

Technical data

Size	6
Type	Male
Type of connection	Crimp connection
UL 94 flammability rating	V-0
Volume resistance	≤2 mΩ

Connection data PE

Blade size, slotted (PE connection)	SD 0.8 x 4.0	Connection type PE	Screw connection
Fixing screw	M 4	Rated cross-section	4 mm ²
Stripping length PE connection	10 mm	Tightening torque, max. PE connection	1.5 Nm
Tightening torque, min. PE connection	1.2 Nm	Wire cross section, AWG (PE), max.	AWG 12
Wire cross section, AWG (PE), min.	AWG 20		

Version

BG	6	Conductor cross-section, max.	4 mm ²
Conductor cross-section, min.	0.5 mm ²	Material	Copper alloy
Size	6	Stripping length, rated connection	7.5 mm
Type of connection	Crimp connection	Volume resistance	≤2 mΩ
Wire connection cross section AWG, max.	AWG 12	Wire connection cross section AWG, min.	AWG 20
Wire connection cross section, finely stranded, max.	4 mm ²	Wire connection cross section, finely stranded, min.	0.5 mm ²
Wire connection cross-section, finely stranded with wire-end ferrules DIN 46228/4, max.	4 mm ²	Wire cross-section, solid, max.	4 mm ²
Wire cross-section, solid, min.	0.5 mm ²		

Classifications

ETIM 6.0	EC000438	ETIM 7.0	EC000438
ETIM 8.0	EC000438	ETIM 9.0	EC000438
ECLASS 9.0	27-44-02-05	ECLASS 9.1	27-44-02-05
ECLASS 10.0	27-44-02-05	ECLASS 11.0	27-44-02-05
ECLASS 12.0	27-44-02-05	ECLASS 13.0	27-44-02-05
ECLASS 14.0	27-44-02-05		

Substance	Acetone
Chemical resistance	Resistant
Substance	Ammonia, watery
Chemical resistance	Conditionally resistant
Substance	Petrol
Chemical resistance	Resistant
Substance	Benzene
Chemical resistance	Resistant
Substance	Diesel oil
Chemical resistance	Conditionally resistant
Substance	Acetic acid, concentrated
Chemical resistance	Resistant
Substance	Potassium hydroxide
Chemical resistance	Conditionally resistant

Creation date July 23, 2024 10:40:20 AM CEST

HDC HE 16 MC

Weidmüller Interface GmbH & Co. KG

Klingenbergstraße 26

D-32758 Detmold

Germany

www.weidmueller.com

Technical data

Substance	Methanol
Chemical resistance	Conditionally resistant
Substance	Motor oil
Chemical resistance	Conditionally resistant
Substance	Lye, diluted
Chemical resistance	Resistant
Substance	Hydrochlorofluorocarbons
Chemical resistance	Conditionally resistant
Substance	Outdoor use
Chemical resistance	Conditionally resistant

Environmental Product Compliance

REACH SVHC	Potassium perfluorobutane sulfonate 29420-49-3
SCIP	1609748e-c278-4c9b-b3d1-e6215d2988cd
Chemical resistance	de.myview.objectmodel.impl.BlockImpl@4b7309b1 de.myview.objectmodel.impl.BlockImpl@54255137 de.myview.objectmodel.impl.BlockImpl@a91adf3 de.myview.objectmodel.impl.BlockImpl@1a72f49c de.myview.objectmodel.impl.BlockImpl@491f58e2 de.myview.objectmodel.impl.BlockImpl@37cd041f de.myview.objectmodel.impl.BlockImpl@3034d920 de.myview.objectmodel.impl.BlockImpl@3def0dae de.myview.objectmodel.impl.BlockImpl@e048ab9 de.myview.objectmodel.impl.BlockImpl@51368a9a de.myview.objectmodel.impl.BlockImpl@47dda445 de.myview.objectmodel.impl.BlockImpl@29a536d
RoHS Compliance Status	Compliant without exemption

Approvals

Approvals



ROHS	Conform
UL File Number Search	UL Website
Certificate No. (cURus)	E92202

Downloads

Approval/Certificate/Document of Conformity	Manufacturer's declaration
Engineering Data	CAD data – STEP
Technical Documentation	1207900000 HDC HE 16 MC STP Blatt 1.pdf
Catalogues	Catalogues in PDF-format
Brochures	FL FIELDWIRING EN FL FIELDWIRING EN

HDC HE 16 MC

Weidmüller Interface GmbH & Co. KG
Klingenbergstraße 26
D-32758 Detmold
Germany

www.weidmueller.com

Drawings

