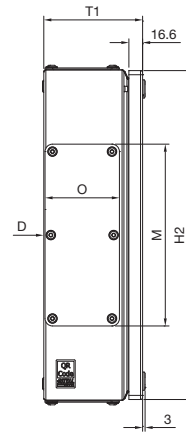
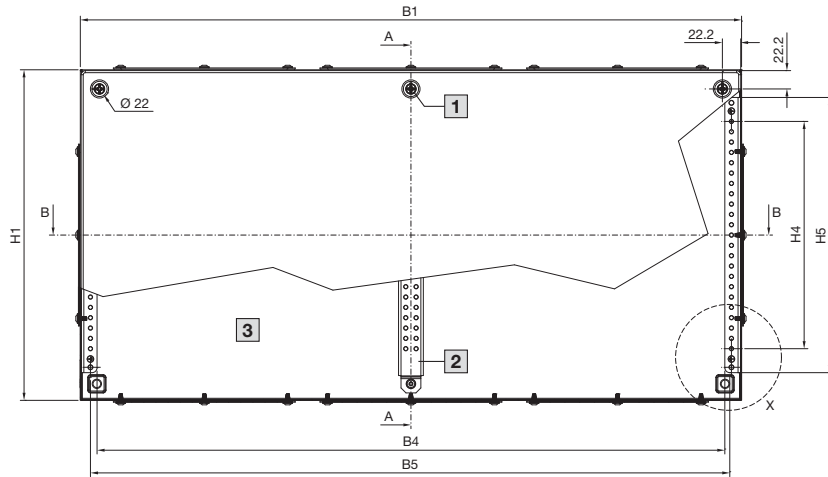


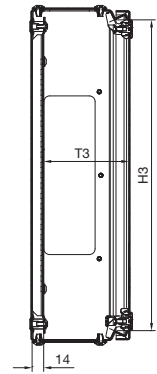
# Small enclosures

## Small enclosures KX, sheet steel

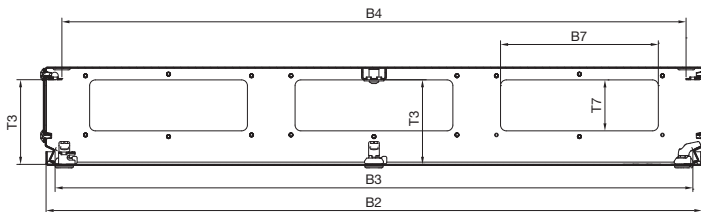
### Terminal boxes KX



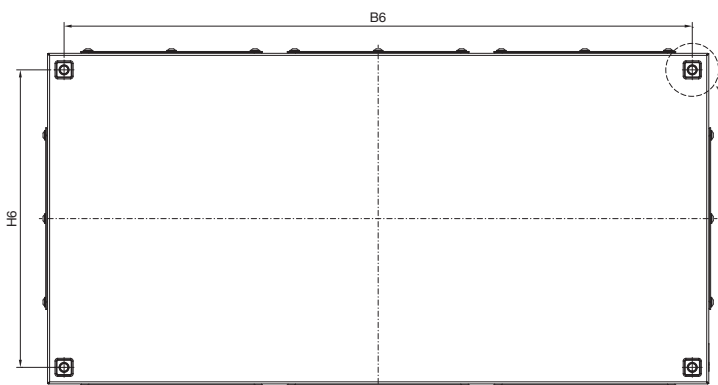
Section A - A



Section B - B



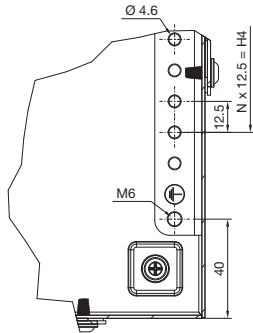
View D



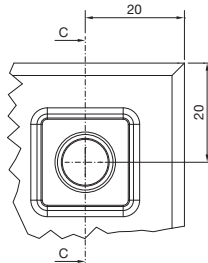
- 1 Central lock where  $B1 > 500$  mm
- 2 Only for KX 1513.000
- 3 Internal view

### Terminal boxes KX

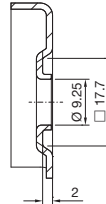
Detail X



Detail Y



Section C – C



#### Enclosure

- B1 = Enclosure width (overall width)
- B2 = Cover width
- B3 = Clearance width, enclosure opening
- B4 = Clearance width between L brackets
- B5 = Distance between axes of the mounting holes in the L brackets
- B6 = Mounting distance, enclosures
- B7 = Gland plate opening
- H1 = Enclosure height (overall height)
- H2 = Cover height
- H3 = Clearance height, enclosure opening
- H4 = Overall height, 12.5 mm pitch pattern of holes
- H5 = Clearance of L brackets
- H6 = Mounting distance, enclosures
- N = No. of 12.5 mm pitch patterns of holes
- T1 = Overall depth
- T3 = Installation depth (distance from inside of cover to L bracket or central bar)
- T7 = Gland plate opening

#### Gland plate

- M = Gland plate width
- O = Gland plate depth

Model No. KX	Width dimensions mm							Height dimensions mm							Depth dimensions mm			Gland plate		
	B1	B2	B3	B4	B5	B6	B7	H1	H2	H3	H4	H5	H6	N	T1	T3	T7	M	O	Qty.
1500.000	150	148	127.7	109.5	125.5	110	-	150	148	127.7	25	83	110	2	120	103.5	-	-	-	-
1501.000	300	298	277.7	259.5	275.5	260	-	150	148	127.7	25	83	110	2	120	103.5	-	-	-	-
1502.000	200	198	177.7	159.5	175.5	160	-	200	198	177.7	75	133	160	6	120	103.5	-	-	-	-
1503.000	300	298	277.7	259.5	275.5	260	-	200	198	177.7	75	133	160	6	120	103.5	-	-	-	-
1504.000	400	398	377.7	359.5	375.5	360	-	200	198	177.7	75	133	160	6	120	103.5	-	-	-	-
1505.000	500	498	477.7	459.5	475.5	460	-	200	198	177.7	75	133	160	6	120	103.5	-	-	-	-
1506.000	600	598	577.7	559.5	575.5	560	-	200	198	177.7	75	133	160	6	120	103.5	-	-	-	-
1507.000	300	298	277.7	259.5	275.5	260	-	300	298	277.7	175	233	260	14	120	103.5	-	-	-	-
1508.000	400	398	377.7	359.5	375.5	360	-	300	298	277.7	175	233	260	14	120	103.5	-	-	-	-
1509.000	500	498	477.7	459.5	475.5	460	-	300	298	277.7	175	233	260	14	120	103.5	-	-	-	-
1510.000	600	598	577.7	559.5	575.5	560	-	300	298	277.7	175	233	260	14	120	103.5	-	-	-	-
1511.000	400	398	377.7	359.5	375.5	360	-	400	398	377.7	275	333	360	22	120	103.5	-	-	-	-
1512.000	600	598	577.7	559.5	575.5	560	-	400	398	377.7	275	333	360	22	120	103.5	-	-	-	-
1513.000	800	798	777.7	759.5	775.5	760	-	400	398	377.7	275	333	360	22	120	103.5	-	-	-	-
1514.000	150	148	127.7	109.5	125.5	110	-	150	148	127.7	25	83	110	2	80	63.5	-	-	-	-
1515.000	300	298	277.7	259.5	275.5	260	-	150	148	127.7	25	83	110	2	80	63.5	-	-	-	-
1516.000	200	198	177.7	159.5	175.5	160	-	200	198	177.7	75	133	160	6	80	63.5	-	-	-	-
1517.000	300	298	277.7	259.5	275.5	260	-	200	198	177.7	75	133	160	6	80	63.5	-	-	-	-
1518.000	400	398	377.7	359.5	375.5	360	-	200	198	177.7	75	133	160	6	80	63.5	-	-	-	-
1527.000	800	798	777.7	759.5	775.5	760	-	200	198	177.7	75	133	160	6	120	103.5	-	-	-	-
1528.000	200	198	177.7	159.5	175.5	160	-	150	148	127.7	25	83	110	2	80	63.5	-	-	-	-
1529.000	200	198	177.7	159.5	175.5	160	-	150	148	127.7	25	83	110	2	120	103.5	-	-	-	-
1530.000	300	298	277.7	259.5	275.5	260	192	150	148	127.7	25	83	110	2	120	103.5	62	220	72	2
1531.000	300	298	277.7	259.5	275.5	260	192	200	198	177.7	75	133	160	6	120	103.5	62	220	72	2
1532.000	400	398	377.7	359.5	375.5	360	192	200	198	177.7	75	133	160	6	120	103.5	62	220	72	2
1533.000	500	498	477.7	459.5	475.5	460	192	200	198	177.7	75	133	160	6	120	103.5	62	220	72	4
1535.000	300	298	277.7	259.5	275.5	260	192	300	298	277.7	175	233	260	14	120	103.5	62	220	72	4
1536.000	400	398	377.7	359.5	375.5	360	192	300	298	277.7	175	233	260	14	120	103.5	62	220	72	4
1537.000	500	498	477.7	459.5	475.5	460	192	300	298	277.7	175	233	260	14	120	103.5	62	220	72	6
1538.000	600	598	577.7	559.5	575.5	560	192	300	298	277.7	175	233	260	14	120	103.5	62	220	72	6
1539.000	400	398	377.7	359.5	375.5	360	192	400	398	377.7	275	333	360	22	120	103.5	62	220	72	4
1540.000	600	598	577.7	559.5	575.5	560	192	400	398	377.7	275	333	360	22	120	103.5	62	220	72	6
1541.000	800	798	777.7	759.5	775.5	760	192	400	398	377.7	275	333	360	22	120	103.5	62	220	72	8
1589.000	400	398	377.7	359.5	375.5	360	-	150	148	127.7	25	83	110	2	120	103.5	-	-	-	-