



 PRODUCT-DETAILS

SH203-B16

SH203-B16 Miniature Circuit Breaker - 3P - B - 16 A



General Information

| | |
|-----------------------|--|
| Extended Product Type | SH203-B16 |
| Product ID | 2CDS213001R0165 |
| EAN | 4016779631341 |
| Catalog Description | SH203-B16 Miniature Circuit Breaker - 3P - B - 16 A |
| Long Description | <p>Compact Home SH200 miniature circuit breakers are current limiting. They have two different tripping mechanisms, the delayed thermal tripping mechanism for overload protection and the electromechanic tripping mechanism for short circuit protection.</p> <p>They are available in different characteristics (B,C), configurations (1P,1P+N,2P,3P,3P+N,4P), breaking capacities (up to 6 kA at 230/400 V AC) and rated currents (up to 40 A). All MCBs of the product range SH200 comply with IEC/EN 60898-1, allowing the use for residential applications.</p> |

Technical

| | |
|---------------------------|---|
| Standards | IEC/EN 60898-1 |
| Tripping Characteristic | B |
| Rated Operational Voltage | acc. to IEC 60898-1 400 V |
| Operational Voltage | Maximum (Incl. Tolerance) 440 V AC Minimum 12 V AC |

| | |
|--|---|
| Rated Insulation Voltage (U _i) | acc. to IEC/EN 60664-1 440 V |
| Rated Impulse Withstand Voltage (U _{imp}) | 4 kV at 2000 m 5 kV at Sea Level 6.2 kV |
| Dielectric Test Voltage | 50/60 Hz, 1 min: 2 kV |
| Input Voltage Type | AC |
| Rated Current (I _n) | 16 A |
| Rated Short-Circuit Capacity | (AC) 6 kA (400 V AC) 6 kA (400 V) 6 kA |
| Rated Conditional Short-Circuit Current (I _{nc}) | (230 V) 6 kA (400 V) 6 kA |
| Rated Frequency (f) | 50 / 60 Hz |
| Power Loss | 7.5 W at Rated Operating Conditions per Pole 2.5 W |
| Power Supply Connection | Arbitrary |
| Contact Position Indication | ON / OFF |
| Energy Limiting Class | 3 |
| Electrical Endurance | 20000 AC cycle |
| Mechanical Endurance | 20000 cycle |
| Number of Protected Poles | 3 |
| Number of Poles | 3 |
| Overvoltage Category | III |
| Tightening Torque | 2 N·m |
| Actuator Type | Toggle |
| Screw Terminal Type | Cage Terminal |
| Actuator Marking | I / O |
| Actuator Material | Insulation Group II, Black, Sealable |
| Housing Material | Insulation Group II, RAL 7035 |
| Mounting on DIN Rail | TH35-15 (35 x 15 mm Mounting Rail) acc. to IEC 60715 TH35-7.5 (35 x 7.5 mm Mounting Rail) acc. to IEC 60715 |
| Mounting Position | any |
| Recommended Screw Driver | Pozidriv 2 |
| Accessories Available | No |
| Connecting Capacity | Conductor 25 / 25 mm ² Flexible with Ferrule 0.75 ... 16 mm ² Flexible 0.75 ... 16 mm ² Rigid 0.75 ... 25 mm ² Stranded 0.75 ... 25 mm ² |
| Installation Size | acc. to DIN 43880 1 |
| Terminal Type | Screw Terminals |

Material Compliance

| | |
|---|--|
| RoHS Information | 2CDK400030D0201 |
| RoHS Status | Following EU Directive 2011/65/EU and Amendment 2015/863 July 22, 2019 |
| RoHS Date | 0335 |
| REACH Declaration | 9AKK108468A9644 |
| REACH Information | True - contains substances > 0.1 mass percentage |
| REACH Date | 20231212 |
| Conflict Minerals Reporting Template (CMRT) | 9AKK108468A3363 |

Environmental

| | |
|--|---|
| Ambient Air Temperature | Operation -25 ... +55 °C Storage -40 ... +70 °C |
| Reference Ambient Air Temperature | 30 °C |
| Degree of Protection | IP20 Enclosure with Cover IP40 |
| Pollution Degree | 2 |
| Environmental Conditions | 28 cycles with 55 °C / 90-96 % and 25 °C / 95-100 % |
| Resistance to Vibrations | 20 Cycles with Load 0.8 In: 5g 5 ... 150 ... 5 Hz |
| Resistance to Shock acc. to IEC 60068-2-27 | 25g 2 shocks 13 ms |
| Environmental Information | 2CDK400030D0201 |

Dimensions

| | |
|-------------------------------------|----------|
| Width in Number of Modular Spacings | 3.0 |
| Product Net Width | 52.5 mm |
| Product Net Height | 85 mm |
| Product Net Depth / Length | 69 mm |
| Product Net Weight | 0.375 kg |
| Pole Net Weight | 0.125 kg |
| Built-In Depth (t ₂) | 69 mm |

Ordering

| | |
|------------------------------|----------------|
| Package Level 1 Units | carton 1 piece |
| Package Level 1 Gross Weight | 0.39 kg |
| E-Number (Finland) | 3210976 |

Certificates and Declarations

| | |
|--------------------------------|-----------------|
| Declaration of Conformity - CE | 2CDK400607D2703 |
| Certification Agency | EN IEC |

Installation

| | |
|--------------------------|-----------------|
| Instructions and Manuals | 2CDS207105P0001 |
|--------------------------|-----------------|

Popular Downloads

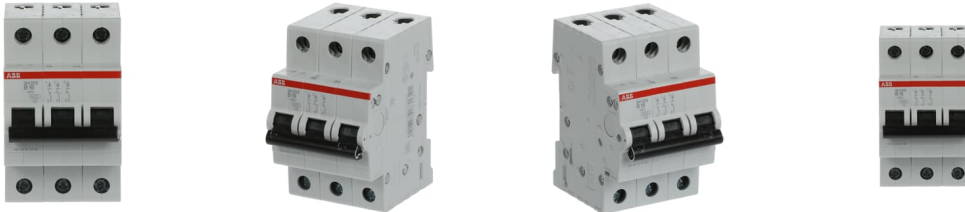
| | |
|-----------------------------------|-----------------|
| Data Sheet, Technical Information | 2CSC400030D0202 |
|-----------------------------------|-----------------|

Classifications

| | |
|------------------------------------|--|
| ETIM 8 | EC000042 - Miniature circuit breaker (MCB) |
| ETIM 9 | EC000042 - Miniature circuit breaker (MCB) |
| WEEE Category | 5. Small Equipment (No External Dimension More Than 50 cm) |
| WEEE B2C / B2B | Business To Business |
| CN8 | 8536 20 10 |
| UNSPSC | 39121603 |
| eClass | V11.0 : 27141901 |
| IDEA Granular Category Code (IGCC) | 4897 >> Miniature circuit breakers |
| Object Classification Code | F |

Categories

Low Voltage Products and Systems → Modular DIN Rail Products → Miniature Circuit Breakers MCBs → Miniature Circuit Breakers MCBs



360