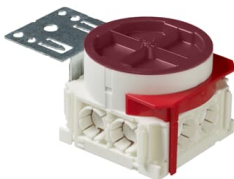




PRODUCT-DETAILS

AU80.2

AU80.2 Mounting box White IP3X



General Information	
Extended Product Type	AU80.2
Product ID	2TKA00002541
EAN	6438199004273
Catalog Description	AU80.2 Mounting box White IP3X
Long Description	The box is mentioned for the installations with the flexible pipe. There is six knock outs for 16/20 mm pipes and two for the 20 mm pipe. In the bottom there is two knock outs for the bottom inlets. The mounting box includes a rotating, steplessly adjustable extension ring with two locking wings and two red half circles enabling installation on boards with a thickness of 12- 39 mm. The minimum installation depht is 45 mm and overall height 58-73 mm. The box includes a metal struss fixture. Made of halogen free material (IEC/61249-2-21) and fulfills the requirements of the glow wire test according to the standard IEC/EN60670: 2005 (850 °C).
Eco Transparency	
Environmental Product Declaration - EPD	9AKK108468A0935

Technical	
Application	None
Model Number	Single
Number of Poles	0
Number of Conduit Inlets	8
Number of Gangs	1
Number of Inlet Inserts Included	0
Design	Device connection box (round/square)
Cover Mounting Type	Snap On
Mounting Type	Flush mounted (plaster)
Switching Equipment Mounting Type	Screw
Shape	Round
Surface Finishing	Untreated
Material	Plastic, Thermoplastic
Includes	Mounting plate
Color	White

Material Compliance	
RoHS Information	9AKK106713A4634
RoHS Status	Following EU Directive 2011/65/EU and Amendment 2015/863 July 22, 2019
RoHS Date	20240314
REACH Declaration	9AKK106713A4633
REACH Information	True - contains substances > 0.1 mass percentage
REACH Date	20240314
Conflict Minerals Reporting Template (CMRT)	9AKK108468A3363
SCIP	Of48dbcd-f68b-4096-98c7-6fd7eb0a1c41 Finland (FI)

Environmental	
Degree of Protection	IP3X

Dimensions	
Product Net Width	0.074 m
Product Net Height	0.057 m
Product Net Depth / Length	124 mm
Product Net Weight	0.1305 kg

Ordering	
Package Level 1 Units	box 60 piece
Package Level 1 Gross Weight	8.1 kg

Certificates and Declarations

Declaration of Conformity - CE	9AKK108467A7115
-----------------------------------	-----------------

Installation

Instructions and Manuals	9AKK10103A2549
-----------------------------	----------------

Popular Downloads

Data Sheet, Technical Information	9AKK10103A2549
Building Information Modeling – BIM	9AKK108468A3694

Classifications

ETIM 8	EC002601 - Box/housing for built-in mounting in the wall/ceiling
ETIM 9	EC002601 - Box/housing for built-in mounting in the wall/ceiling
WEEE Category	Product Not in WEEE Scope

Categories

Low Voltage Products and Systems → Installation Materials → Flush Mounted Boxes → Plastic Installation Boxes (for WA Inserts)
→ Hollow Wall

