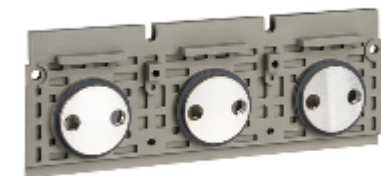


# Product Datasheet

## Characteristic

33604

Vertical rear connection, MasterPact NT06/NT16, ComPacT NS630b/NS1600, 3 poles, fixed, 630A/1600A, top mounting



### Main

Range of product	MasterPact NT ComPacT NS630b...1600 new generation
product or component type	Rear connection
Accessory / separate part categor	Connection accessory
Range compatibility	Masterpact MasterPact NT ComPact ComPact NS630b...1600
poles description	3P
mounting mode	Fixed
[In] rated current	630...1600 A

### Complementary

Location of connection	Rear
Localisation on device	Top
Connection position	Vertical
Connection pitch	70 mm

### Packing Units

Unit Type of Package 1	PCE
Number of Units in Package 1	1
Package 1 Height	3.0 cm
Package 1 Width	8.0 cm
Package 1 Length	20.0 cm
Package 1 Weight	2.264 kg

### Offer Sustainability

REACH Regulation	Free of Substances of Very High Concern above the threshold
REACH free of SVHC	Yes
EU RoHS Directive	Compliant
Toxic heavy metal free	Yes
Mercury free	Yes
China RoHS Regulation	X
RoHS exemption information	Yes

