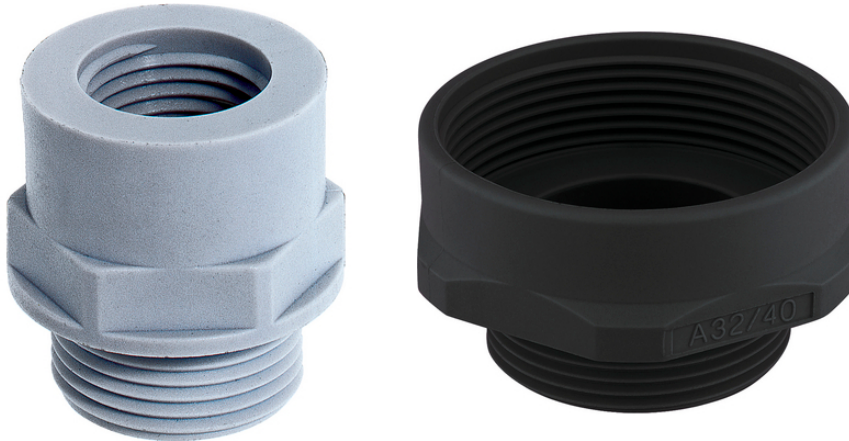


SKINDICHT® EKU-M

SKINDICHT® EKU-M, metric cable gland accessories for cable glands with larger connection threads than the existing threaded holes



Assembly time



Space requirement



Reliability

Benefits

Enables the use of cable glands with larger connection threads than the existing threaded holes

Assembling with a wrench

Supporting surface for spanner means scratches on the housing are avoided

Application range

Machines

Devices

Housings

Product Make-up

Metric connection thread acc. to DIN EN 60423

Basis for technical information DIN IEC 62444

Technical Data

Classification ETIM 5:

ETIM 5.0 Class-ID: EC000441

ETIM 5.0 Class-Description: Cable screw gland

Classification ETIM 6:

ETIM 6.0 Class-ID: EC000441

ETIM 6.0 Class-Description: Cable screw gland

Colour delivered:

Light grey (RAL 7035)

Black (RAL 9005), UV-resistant

Material:

Polyamide, glass fibre-reinforced

Temperature range:

-40 °C to +100 °C

Last Update (26.04.2024)

©2024 Lapp Group - Technical changes reserved

Product Management www.lappkabel.de

You can find the current technical data in the corresponding data sheet.

PN 0456 / 02_03.16

SKINDICHT® EKU-M

Note

Photographs and graphics are not to scale and do not represent detailed images of the respective products.
Prices are net prices without VAT and surcharges. Sale to business customers only.

SKINDICHT® EKU-M

Article number	Thread, male M1	Thread, female M2	SW wrench size mm	Pieces / PU
SKINDICHT® EKU-M				
52100300	12 x 1.5	16 x 1.5	20	100
52100301	16 x 1.5	20 x 1.5	24	100
52100302	20 x 1.5	25 x 1.5	29	100
52100303	25 x 1.5	32 x 1.5	36	50
52100304	32 x 1.5	40 x 1.5	46	25
52100305	40 x 1.5	50 x 1.5	55	10
52100306	50 x 1.5	63 x 1.5	68	10
SKINDICHT® EKU-M black				
52100308	12 x 1.5	16 x 1.5	20	100
52100309	16 x 1.5	20 x 1.5	24	100
52100310	20 x 1.5	25 x 1.5	30	100
52100311	25 x 1.5	32 x 1.5	36	50
52100312	32 x 1.5	40 x 1.5	44	25
52100313	40 x 1.5	50 x 1.5	55	10
52100314	50 x 1.5	63 x 1.5	70	10

Last Update (26.04.2024)

©2024 Lapp Group - Technical changes reserved

 Product Management www.lappkabel.de

 You can find the current technical data in the corresponding data sheet.
 PN 0456 / 02_03_16