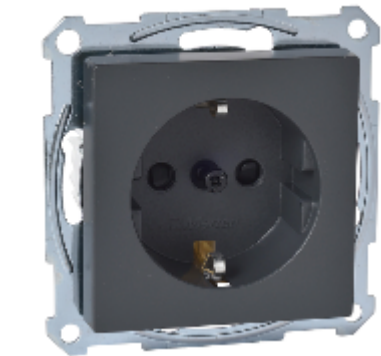


# Product Datasheet

## Characteristic

MTN2400-0414

Socket-outlet, Merten System M,  
mechanism with fixing frame, 2P + E,  
16A, German,anthracite



## Main

Aesthetic name	System M M-Star M-Plan M-Arc M-Smart M-Elegance M-Plan glass
device presentation	Mechanism with central plate
outlet standard	German
product or component type	Socket-outlet
Socket additional information	Shuttered

## Complementary

Outlet poles configuration	2P + E
wiring device mounting	Flush
Fixing mode	By screws and claws
Colour tint	Anthracite (RAL 7024)
Connections - terminals	Screw terminal
Rated current	16 A
[Ue] rated operational voltage	250 V

## Environment

IP degree of protection	IP20
-------------------------	------

## Packing Units

Unit Type of Package 1	PCE
Number of Units in Package 1	1
Package 1 Height	5.700 cm
Package 1 Width	7.700 cm
Package 1 Length	7.700 cm
Package 1 Weight	90.000 g
Unit Type of Package 2	CAR
Number of Units in Package 2	50
Package 2 Height	20.800 cm

Package 2 Width	30.900 cm
Package 2 Length	40.300 cm
Package 2 Weight	4.946 kg

Offer Sustainability

EU RoHS Directive	Under investigation
WEEE	The product must be disposed on European Union markets following specific waste collection and never end up in rubbish bins