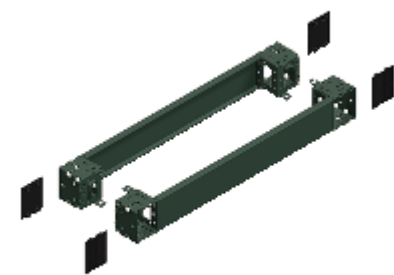


Product Datasheet

Characteristic

NSYSPF8100

Front & rear plinth, PanelSeT SFN, PanelSeT SF, PanelSeT SM, for electrical enclosure W800mm, plinth H100mm



Overview

Lead time	Usually Ships within 4 Weeks
-----------	------------------------------

Main

Range	PanelSeT
Accessory / separate part categor	Enclosure accessory
product or component type	Front and rear plinth
Device application	Electronic application Compartmentalised application Multi-purpose
Enclosure nominal dimensions	-
Device composition	fixing elements 4 corner cover 1 front panel 1 rear panel 4 corner
Range compatibility	PanelSeT PanelSeT SF PanelSeT PanelSeT SM PanelSeT PanelSeT S3D PanelSeT PanelSeT CRN
Mounting support	Plinth side panels

Complementary

Fixing mode	By fixing element - on structure location
Colour	Grey (RAL 7022)
Surface finish	Epoxy-polyester powder
permanent permissible load	1300 kg
Height	100 mm
Width	Nominal: 800 mm

Environment

IP degree of protection	IP20 (complete plinth)
-------------------------	------------------------

IK degree of protection	IK10
-------------------------	------

Packing Units

Unit Type of Package 1	PCE
Number of Units in Package 1	1
Package 1 Height	11.0 cm
Package 1 Width	20.5 cm
Package 1 Length	81.5 cm
Package 1 Weight	5.201 kg
Unit Type of Package 2	P12
Number of Units in Package 2	56
Package 2 Height	103.0 cm
Package 2 Width	80.0 cm
Package 2 Length	120.0 cm
Package 2 Weight	303.256 kg

Offer Sustainability

Sustainable offer status	Green Premium product
REACH Regulation	Reference contains Substances of Very High Concern above the threshold
EU RoHS Directive	Pro-active compliance (Product out of EU RoHS legal scope)
Mercury free	Yes
China RoHS Regulation	Product out of China RoHS scope. Substance declaration for your information
RoHS exemption information	Yes
Environmental Disclosure	ENVPEP110923EN
Circularity Profile	N/A