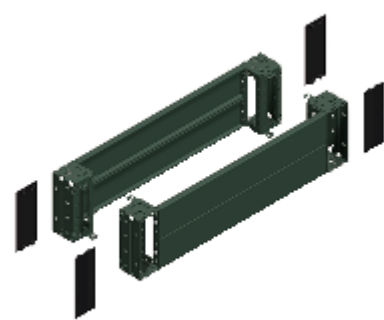


# Product Datasheet

## Characteristic

# NSYSPF8200

Front & rear plinth, PanelSeT SFN, PanelSeT SF, PanelSeT SM, for electrical enclosure W800mm, plinth H200mm



## Main

Range	PanelSeT
Accessory / separate part categor	Enclosure accessory
product or component type	Front and rear plinth
Device application	Multi-purpose Electronic application Compartmentalised application
Enclosure nominal dimensions	-
Device composition	fixing elements 4 corner cover 4 corner 2 front panel 2 rear panel
Range compatibility	PanelSeT PanelSeT SF PanelSeT PanelSeT SM PanelSeT PanelSeT S3D PanelSeT PanelSeT CRN
Mounting support	Plinth side panels

## Complementary

Fixing mode	By fixing element - on structure location
Colour	Grey (RAL 7022)
Surface finish	Epoxy-polyester powder
permanent permissible load	1300 kg
Height	200 mm
Width	Nominal: 800 mm

## Environment

IP degree of protection	IP20 (complete plinth)
IK degree of protection	IK10

## Packing Units

Unit Type of Package 1	PCE
Number of Units in Package 1	1
Package 1 Height	20.000 cm
Package 1 Width	21.000 cm
Package 1 Length	81.500 cm
Package 1 Weight	9.000 kg
Unit Type of Package 2	PAM
Number of Units in Package 2	28
Package 2 Height	160.000 cm
Package 2 Width	100.000 cm
Package 2 Length	120.000 cm
Package 2 Weight	265.000 kg

### Offer Sustainability

Sustainable offer status	Green Premium product
REACH Regulation	Reference contains Substances of Very High Concern above the threshold
EU RoHS Directive	Pro-active compliance (Product out of EU RoHS legal scope)
Mercury free	Yes
China RoHS Regulation	Product out of China RoHS scope. Substance declaration for your information
RoHS exemption information	Yes
Environmental Disclosure	ENVPEP110923EN
Circularity Profile	N/A