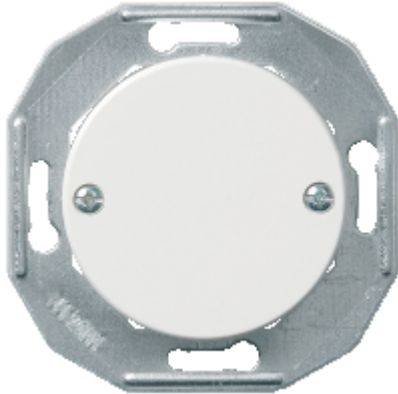


Product Datasheet

Characteristic

WDE011090

Renova - blind cover plate - white



Main

| | |
|---------------------------|-------------------------------|
| Range | Renova |
| product or component type | Blind cover |
| device presentation | Cover plate with fixing frame |
| Colour tint | White (RAL 9010) |
| Quantity per set | 1 |

Complementary

| | |
|-------------------------|--------|
| device mounting | Flush |
| Fixing mode | Screw |
| Material | PC/ABS |
| IP degree of protection | IP20 |
| Diameter | 51 mm |
| Depth | 10 mm |

Packing Units

| | |
|------------------------------|------------|
| Unit Type of Package 1 | PCE |
| Number of Units in Package 1 | 1 |
| Package 1 Height | 2.700 cm |
| Package 1 Width | 8.100 cm |
| Package 1 Length | 9.000 cm |
| Package 1 Weight | 30.000 g |
| Unit Type of Package 2 | BB1 |
| Number of Units in Package 2 | 5 |
| Package 2 Height | 8.200 cm |
| Package 2 Width | 9.200 cm |
| Package 2 Length | 9.800 cm |
| Package 2 Weight | 166.000 g |
| Unit Type of Package 3 | P12 |
| Number of Units in Package 3 | 6000 |
| Package 3 Height | 115.000 cm |
| Package 3 Width | 80.000 cm |
| Package 3 Length | 120.000 cm |
| Package 3 Weight | 259.600 kg |

Offer Sustainability

| | |
|----------------------------|---|
| Sustainable offer status | Green Premium product |
| REACH Regulation | Free of Substances of Very High Concern above the threshold |
| REACH free of SVHC | Yes |
| EU RoHS Directive | Pro-active compliance (Product out of EU RoHS legal scope) |
| Toxic heavy metal free | Yes |
| Mercury free | Yes |
| China RoHS Regulation | Pro-active China RoHS declaration (out of China RoHS legal scope) |
| RoHS exemption information | Yes |
| Environmental Disclosure | ENVPEP1507003 |
| Circularity Profile | N/A |