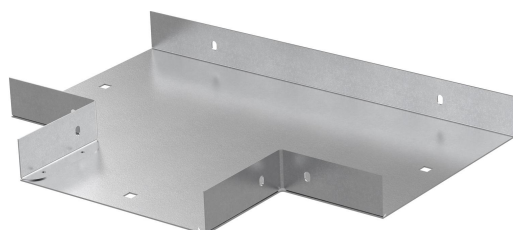


# T-junction W12/40-400 PG

Reference 717912



Activity  
Product family  
Brand

Cable support systems  
Cable trays  
Wibe

## Commercial and Web

Short description	T-junction W12/40-400 PG
Medium description	Wibe - T-junction W12/40-400 - steel pre-galvanized
Material	Steel
Material type or surface treatment	Pre-galvanized
Corrosion class	C2

## Base

Activity	Cable support systems
Product family	Cable trays
Brand	Wibe
GTIN	7321677179121

## ETIM (EC001544-Tee for cable tray)

Cable tray height (EF004822)	40 mm
Cable tray width (EF004820)	400 mm
Construction type (EF000767)	T-piece horizontal
Inner radius (EF004793)	* mm
NATO (EF006059)	No
Model (EF000010)	Without connector
Wide span model (EF006397)	No
Suitable for circuit integrity (EF007806)	No
Material (EF002169)	Steel
Stainless steel, pickled (EF006388)	No
Material quality (EF001257)	Other

Surface protection (EF000139)	Continuously galvanized
Colour (EF000007)	*
RAL (EF000116)	*

---

## Logistic

Pack 1 type	Each
Quantity pack 1	1
Weight pack 1	3.14 kg
Length pack 1	598 mm
Width pack 1	498 mm
Height pack 1	40 mm
Pack 4 type	Pallet
Quantity pack 4	18
Weight pack 4	87 kg
Length pack 4	1200 mm
Width pack 4	800 mm
Height pack 4	340 mm
Customs code	73089059
Net weight	3.14 kg
Country of origin	SE

---

## Certification

ETIM class	EC001544
------------	----------

---

## Status product

Product status	Commercialized
----------------	----------------

---

## Environmental

GWP Total A1-A3	8.918 kgCO2e
-----------------	--------------

---

## Product downloads

---

For the latest information check <http://wibe-group.com/cable-support-systems/cable-trays/form-pieces/t-junction-w12-400-pre-galv>