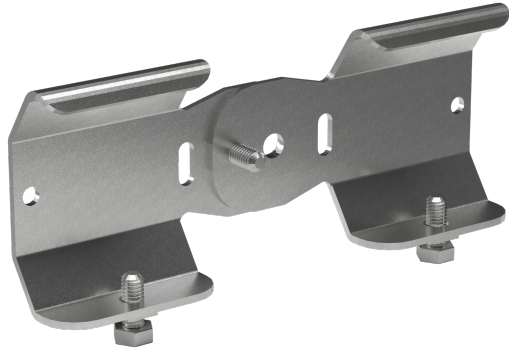


Coupling 22 PG

Reference 721122



Activity
Product family
Brand

Cable support systems
Cable ladders
Wibe

Commercial and Web

Short description	Coupling 22 PG
Medium description	Wibe - coupling 22 - steel pre-galvanized
Material	Steel
Material type or surface treatment	Pre-galvanized
Corrosion class	C2

Base

Activity	Cable support systems
Product family	Cable ladders
Brand	Wibe
GTIN	7321677211227

ETIM (EC002413-Connector for cable support system)

Model (EF000010)	Length- and angle joint
Hinged joint horizontal (EF006392)	Yes
Hinged joint vertical (EF006393)	Yes
Type of connection (EF000064)	Screw connector
Suitable for wire mesh tray (EF005163)	No
Suitable for cable ladder (EF005165)	Yes
Suitable for cable tray (EF005166)	No
Suitable for cable management system width (EF008339)	150-600 mm
Suitable for cable management	60 mm

system height (EF006391)	
Suitable for mesh cable tray filament (EF005164)	* mm
Length (EF001438)	* mm
Suitable for circuit integrity (EF007806)	No
Material (EF002169)	Steel
Stainless steel, pickled (EF006388)	No
Material quality (EF001257)	Other
Surface protection (EF000139)	Continuously galvanized
Colour (EF000007)	*
RAL (EF000116)	*

Logistic

Pack 1 type	Each
Quantity pack 1	1
Weight pack 1	.21 kg
Length pack 1	150 mm
Width pack 1	80 mm
Height pack 1	24 mm
Customs code	73089059
Net weight	.21 kg
Country of origin	SE

Certification

ETIM class	EC002413
------------	----------

Status product

Product status	Commercialized
----------------	----------------

Environmental

GWP Total A1-A3	.596 kgCO2e
-----------------	-------------

Product downloads

For the latest information check <http://wibe-group.com/cable-support-systems/cable-ladders/accessories/coupling-22-pre-galv>