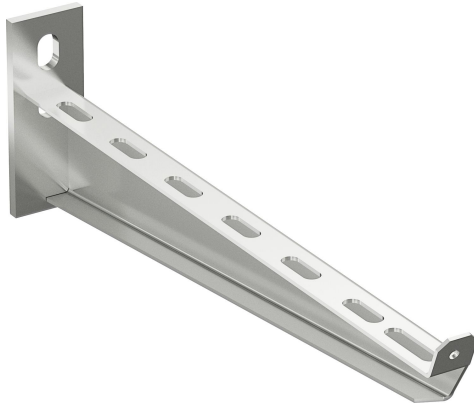


# Cantilever arm 50-500 HDG

Reference 723438



Activity  
Product family  
Brand

Cable support systems  
Support system  
Wibe

## Commercial and Web

Short description	Cantilever arm 50-500 HDG
Medium description	Wibe - cantilever arm 50-500 - steel hot-dip galvanized
Width	500 mm
Material	Steel
Material type or surface treatment	Hot-dip galvanized
Corrosion class	C4

## Base

Activity	Cable support systems
Product family	Support system
Brand	Wibe
GTIN	7321677234387

## ETIM (EC000022-Bracket for cable support system)

Length (EF001438)	550 mm
Width (EF000008)	550 mm
Height (EF000040)	140 mm
Suitable for cable management system width (EF008339)	100 - 500 mm
Model (EF000010)	Wall- and profile console
Angle (EF005434)	90 - 90 °

Load bearing capacity (EF002918)	7 kN
Suitable for circuit integrity (EF007806)	No
Material (EF002169)	Steel
Material quality (EF001257)	Other
Surface protection (EF000139)	Hot-dip galvanized
Colour (EF000007)	*
RAL (EF000116)	*

---

## Logistic

Pack 1 type	Each
Quantity pack 1	1
Weight pack 1	1.72 kg
Length pack 1	550 mm
Width pack 1	50 mm
Height pack 1	140 mm
Pack 4 type	Pallet
Quantity pack 4	80
Weight pack 4	186 kg
Length pack 4	1200 mm
Width pack 4	800 mm
Height pack 4	340 mm
Customs code	73089059
Net weight	1.72 kg
Country of origin	SE

---

## Certification

ETIM class	EC000022
------------	----------

---

## Status product

Product status	Commercialized
----------------	----------------

---

## Environmental

GWP Total A1-A3	4.7988 kgCO2e
-----------------	---------------

---

## Product downloads

---

For the latest information check <http://wibe-group.com/cable-support-systems/cable-trays/cantilevers-central-suspension-brackets/cantilever-arm-50-500-hdg>