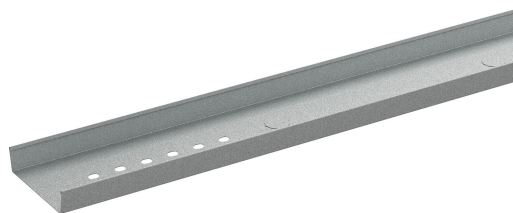


Tele-conduit 36/100 2m PG

Reference 725066



Activity
Product family
Brand

Cable support systems
Cable ladders
Wibe

Commercial and Web

Short description	Tele-conduit 36/100 2m PG
Medium description	Wibe - tele-conduit 36/100 - 2 m - steel pre-galvanized
Length	2000 mm
Width	100 mm
Height	24 mm
Material	Steel
Material type or surface treatment	Pre-galvanized
Corrosion class	C2

Base

Activity	Cable support systems
Product family	Cable ladders
Brand	Wibe
GTIN	7321677250660

ETIM (EC001000-Separation plate for cable support system)

Partition height (EF005362)	24 mm
Length (EF001438)	2000 mm
Model (EF000010)	U-profile
Mounting perforation (EF008150)	Yes
Type of fastening (EF002442)	Screwable
Suitable for wire mesh tray (EF005163)	No
Suitable for cable ladder (EF005165)	Yes
Suitable for cable tray (EF005166)	No
Suitable for circuit integrity (EF007806)	No

Material (EF002169)	Steel
Stainless steel, pickled (EF006388)	No
Material quality (EF001257)	Other
Surface protection (EF000139)	Continuously galvanized
RAL (EF000116)	*
Colour (EF000007)	*

Logistic

Quantity pack 1	1
Weight pack 1	1.42 kg
Length pack 1	2000 mm
Width pack 1	100 mm
Height pack 1	24 mm
Customs code	73089059
Net weight	1.42 kg
Country of origin	SE

Certification

ETIM class	EC001000
------------	----------

Status product

Product status	Commercialized
----------------	----------------

Environmental

GWP Total A1-A3	4.033 kgCO2e
-----------------	--------------

Product downloads

For the latest information check <http://wibe-group.com/cable-support-systems/cable-ladders/dividers/tele-conduit-36-100-2m-pre-galv>