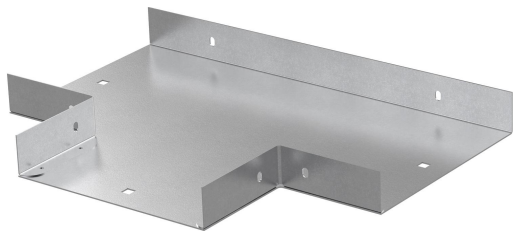


T-junction W12/40-400 PG white

Reference 729143



Activity	Cable support systems
Product family	Cable trays
Brand	Wibe

Commercial and Web

Short description	T-junction W12/40-400 PG white
Medium description	Wibe - T-junction W12/40-400 - steel pre-galvanized - white
Material	Steel
Material type or surface treatment	Painted
Corrosion class	C2

Base

Activity	Cable support systems
Product family	Cable trays
Brand	Wibe
GTIN	7321677291434

ETIM (EC001544-Tee for cable tray)

Cable tray height (EF004822)	40 mm
Cable tray width (EF004820)	400 mm
Construction type (EF000767)	T-piece horizontal
Inner radius (EF004793)	* mm
NATO (EF006059)	No
Model (EF000010)	Without connector
Wide span model (EF006397)	No
Suitable for circuit integrity (EF007806)	No
Material (EF002169)	Steel
Stainless steel, pickled (EF006388)	No
Material quality (EF001257)	Other

Surface protection (EF000139)	Continuously galvanized and coated
Colour (EF000007)	White
RAL (EF000116)	*

Logistic

Pack 1 type	Each
Quantity pack 1	1
Weight pack 1	3.14 kg
Length pack 1	598 mm
Width pack 1	498 mm
Height pack 1	40 mm
Pack 4 type	Pallet
Quantity pack 4	30
Weight pack 4	131 kg
Length pack 4	1200 mm
Width pack 4	800 mm
Height pack 4	530 mm
Customs code	73089059
Net weight	3.14 kg
Country of origin	SE

Certification

ETIM class	EC001544
------------	----------

Status product

Product status	Commercialized
----------------	----------------

Product downloads

For the latest information check <http://wibe-group.com/cable-support-systems/cable-trays/form-pieces/t-junction-w12-400-pre-galv-white>