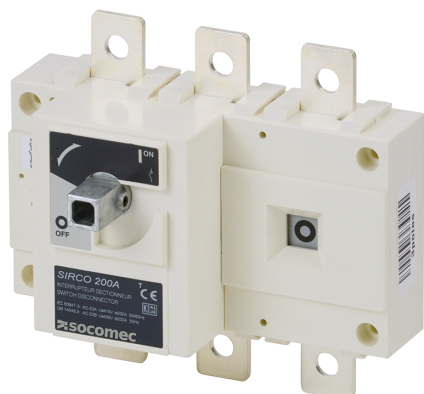


26003026

AC Load break switch SIRCO 3P 250A front operation w/o handle



SIRCO are manually or remotely operated multipolar load break switches. They make and break under load conditions and provide safe isolation. SIRCO are designed for 415 VAC and DC low voltage electrical circuits.

Strong points

- Reliability and performance
- Safety of property and personnel
- Simplicity
- Easy to install

General characteristics

- Double positive break indication given through a position indication window, located directly on the product, and by the operating handle.
- Severe load duty categories (AC-22 and AC-23).
- High resistance to damp heat (supplied "tropicalised").

Compliance with standards

- IEC 60947-3

Link to the reference

Classification

UNSPSC	39122233
ETIM Class	EC000216
IGCC	5290

Commerce

Effective date	1993-04-14
Offer Life Cycle Code	40
Country of origin	TN
Former product list	25003025 SIRCO VM2 3X250A F

Environmental Sustainability

PEP Filename	SOCO-00069-V01.01-EN.pdf
Climate change - Total - Cradle to Grave [kg CO ₂ eq.]	106
Climate change - Total - Cradle to Gate [kg CO ₂ eq.]	11

ETIM - Electrical characteristics

Max. rated operation voltage Ue AC [V]	500
Rated operating voltage [V]	400..500
Rated permanent current Iu [A]	250
Rated permanent current at AC-23, 400 V [A]	250
Rated permanent current at AC-21, 400 V [A]	250
Rated short-time withstand current Icw [kA]	9
Rated operation power at AC-23, 400 V [kW]	140
Switching power at 400 V [kW]	140
Conditioned rated short-circuit current Iq [kA]	50
Number of poles	3

ETIM - Mechanical characteristics

Suitable for floor mounting	No
Suitable for front mounting 4-hole	No
Suitable for front mounting centre	No
Suitable for distribution board installation	No
Suitable for intermediate mounting	Yes
Colour control element	Other
Degree of protection (IP), front side	IP20

ETIM - Technical features

Version as main switch	Yes
Version as maintenance-/service switch	Yes
Version as safety switch	Yes
Version as emergency stop installation	Yes
Version as reversing switch	No
Number of switches	1

Motor drive optional	No
Motor drive integrated	No
Voltage release optional	No
Device construction	Built-in device fixed built-in technique
Type of control element	Other
Interlockable	Yes
Type of electrical connection of main circuit	Bolt connection
Logistics	
GTIN/EAN	3596031118410
Customs number	8536508000
Price unit	PC
Weight of the packing unit [kg]	1.76
Length of the packing unit [m]	0.237
Width of the packing unit [m]	0.108
Depth of the packing unit [m]	0.182
Norms	
Conformity to standards	IEC
SYSTEME	
ReferenceLabel	26003026 SIRCO 3X250A F
Technical Characteristics	
Length of the product unit [mm]	160
Width of the product unit [mm]	180
Depth of the product unit [mm]	75
Weight [kg]	1.76
Control operator	Direct : B2, J1 / External : S2
Number of poles	3
Rated voltage	415 VAC / 500 VDC
Rated current [A]	250
Type	Front Operation
Frame size	B4